

13 Likelihoods for the rate ratio

In previous chapters we have introduced the main ideas of probability models in epidemiology and discussed the use of likelihood to provide an estimate, confidence interval or p-value for the parameter of a probability model. Although we have used the joint log likelihood for several parameters our discussion of confidence intervals and p-values has been based on probability models with only a single parameter. We now consider probability models with two or more parameters.

13.1 Comparing rates using the rate ratio

A simple and important problem which involves two parameters is the comparison of two rates, for example for a cohort which was exposed to some environmental factor and an unexposed cohort. The probability model which underlies such a comparison has parameters corresponding to the rates of failure in the two cohorts. We shall use a subscript notation to denote exposure groups and write λ_1 for the rate parameter conditional on exposure, and λ_0 for the rate parameter conditional on non-exposure.

Table 13.1 shows a preliminary tabulation of some data which will be analysed in detail in this and the following chapter.* The data relate subsequent incidence of ischaemic heart disease (IHD) to dietary energy intake. The study cohort consisted of 337 men whose energy intake was assessed by a seven-day weighed dietary survey. The subsequent follow-up was for an average of 13.7 years and yielded 45 new cases of IHD. The table divides this cohort into an exposed group consisting of men whose energy intake was less than 2750 kcals per day, the remaining men being regarded as unexposed. Although it might seem odd to denote the low energy intake group as exposed, this is because low energy intake is a surrogate measure for physical inactivity. Table 13.1 also introduces some algebraic notation: D_0, D_1 for the number of disease events observed in the unexposed and exposed cohorts respectively, and Y_0, Y_1 for the corresponding person-years observation.

*Unpublished data. The study is described by Morris, J.N. *et al.* (1977) *British Medical Journal*, 19 November 1977, 2, 1307-1314.

Table 13.1. Incidence of ischaemic heart disease by energy intake

	Energy intake	
	< 2750 kcals (exposed)	≥ 2750 kcals (unexposed)
Person years	1857.5 (Y_1)	2768.9 (Y_0)
New cases	28 (D_1)	17 (D_0)
Estimated rate	15.1	6.1
90% interval	(11.1 → 20.6)	(4.1 → 9.1)

The data from the unexposed group leads to

$$D_0 \log(\lambda_0) - \lambda_0 Y_0 = 17 \log(\lambda_0) - 2768.9 \lambda_0$$

as the log likelihood for λ_0 . The most likely value of λ_0 is the observed incidence rate, $17/2768.9 = 6.1$ per 1000 person-years. The fact that this estimate is based on only 17 observed cases is reflected in the rather wide 90% confidence interval for λ_0 stretching from 4.1 to 9.1 per 1000 person-years. Similarly, the data from the exposed group leads to

$$D_1 \log(\lambda_1) - \lambda_1 Y_1 = 28 \log(\lambda_1) - 1857.5 \lambda_1$$

as the log likelihood for λ_1 . The most likely value of λ_1 is $28/1857.5 = 15.1$ per 1000 person-years, and the 90% confidence interval stretches from 11.1 to 20.6 per 1000 person-years. The two groups provide independent sets of data, so that the two log likelihoods are added to yield the joint log likelihood

$$17 \log(\lambda_0) - 2768.9 \lambda_0 + 28 \log(\lambda_1) - 1857.5 \lambda_1.$$

This is the likelihood for any specified pair of values for the two parameters λ_0 and λ_1 . Its maximum value is achieved when these parameters take values equal to the corresponding observed rates — 6.1 and 15.1 per 1000 person-years respectively.

The 90% confidence intervals for the two rates do not overlap and it might seem that the data support the proposition that the two rates are different. In general, however, the degree of overlap of confidence intervals is a poor criterion for comparing rates. If the interval in the high intake group had stretched from, say, 3.0 to 12.0 then it could be argued that, since values of the rate parameter in the range from 11.1 to 12.0 are included in both intervals, the data do not support the idea that the rates are different. The flaw in this argument is that this range is at the extreme of both ranges; the support for the proposition that the rates are similar requires two rather poorly supported propositions to hold simultaneously.

The way to approach such problems is to reparametrize the model in such a way that one of the new parameters makes a comparison. The usual comparison parameter for two rates is the *rate ratio*, which we shall denote by the Greek letter θ . Since $\theta = \lambda_1/\lambda_0$, the rate in the exposed cohort may be written as $\theta\lambda_0$ instead of λ_1 and our model can be written in terms of the parameters (θ, λ_0) instead of (λ_1, λ_0) .

The log likelihood for λ_0 and λ_1 in terms of D_0, D_1, Y_0, Y_1 is

$$D_0 \log(\lambda_0) - \lambda_0 Y_0 + D_1 \log(\lambda_1) - \lambda_1 Y_1.$$

To express the log likelihood in terms of the new parameter system, we substitute $\theta\lambda_0$ for λ_1 , to get

$$D_0 \log(\lambda_0) - \lambda_0 Y_0 + D_1 \log(\theta\lambda_0) - \theta\lambda_0 Y_1,$$

which reduces to

$$D \log(\lambda_0) + D_1 \log(\theta) - \lambda_0 Y_0 - \theta\lambda_0 Y_1,$$

where $D = D_0 + D_1$ is the total number of observed disease events. For the example in Table 13.1, the log likelihood is

$$45 \log(\lambda_0) + 28 \log(\theta) - 2768.9\lambda_0 - 1857.5\theta\lambda_0$$

The purpose of this choice of new parameters for the model is to concentrate the comparison of the rates into the parameter θ , but unfortunately, the log likelihood for these new parameters cannot be divided into a sum of separate parts, one for each parameter. The appearance of the term $1857.5\theta\lambda_0$ means that the shape of the log likelihood with respect to θ depends on the value of λ_0 , and this is unknown. When assessing the support for different values of θ , not knowing λ_0 is somewhat of a problem and in this context λ_0 is called a *nuisance parameter*.

There are two ways of dealing with a nuisance parameter when constructing a likelihood for the parameter of interest. These will be described in the next two sections.

13.2 Profile likelihood

The obvious way to deal with a nuisance parameter is to *estimate* its value. For each value of the rate ratio θ , the value of λ_0 which maximizes the likelihood can be determined and substituted into the joint log likelihood. The resulting maximized log likelihood can then be used as a measure of support for this value of θ .

This idea is illustrated in Fig. 13.1. The top graph shows the log likelihood ratio for $\log(\lambda_0)$ and $\log(\theta)$ as a contour map. The contour lines,

corresponding to parameter values which have equal log likelihood, are approximately elliptical (this has been aided by the choice of log scales for both parameters, so that they are not bounded). The contours shown correspond to log likelihood ratios of $-1, -2, -3, -4,$ and -5 relative to the maximum value.

The vertical arrows denote specified values of $\log(\theta)$ for which we require to measure the support. For each fixed value of $\log(\theta)$, we find the value of $\log(\lambda_0)$ which maximizes the log likelihood and plot this maximized log likelihood on the lower graph. This is then used to measure the relative support lent by the data to different values of $\log(\theta)$. By analogy with physical maps, this curve is called a *profile* log likelihood. A profile log likelihood is not a true log likelihood since it cannot be directly obtained by taking the log of the probability of the data. However, in most situations it behaves in exactly the same way as a log likelihood. It can be seen from Fig. 13.1 that the value of θ which gives the largest value of the profile log likelihood is also the value corresponding to the maximum of the total log likelihood. The curvature of the profile log likelihood at this maximum point can be used to calculate approximate confidence intervals and Wald tests, and score tests for null values of θ can be carried out using the gradient and curvature of the profile log likelihood at the null value. Similarly, a log likelihood ratio test can be carried out by calculating minus twice the profile log likelihood ratio at the null value of θ .

In the case of the rate ratio, this process is simplified since the derivation of the profile log likelihood can be carried out algebraically, leading to a mathematical equation for the curve. The value of λ_0 which maximizes the log likelihood for any given value of θ may be shown to be

$$\frac{D}{Y_0 + \theta Y_1}$$

and substituting this for λ_0 in the log likelihood expression gives the profile log likelihood:

$$D_1 \log(\theta) - D \log(Y_0 + \theta Y_1) + D \log(D) - D.$$

Since the last two terms do not depend upon θ , they are irrelevant and may be omitted. We are also at liberty to *add* terms which do not involve θ , and addition of

$$D_1 \log(Y_1) + D_0 \log(Y_0)$$

yields, after some rearrangement, the expression:

$$D_1 \log\left(\frac{\theta Y_1}{Y_0}\right) - D \log\left(1 + \frac{\theta Y_1}{Y_0}\right).$$

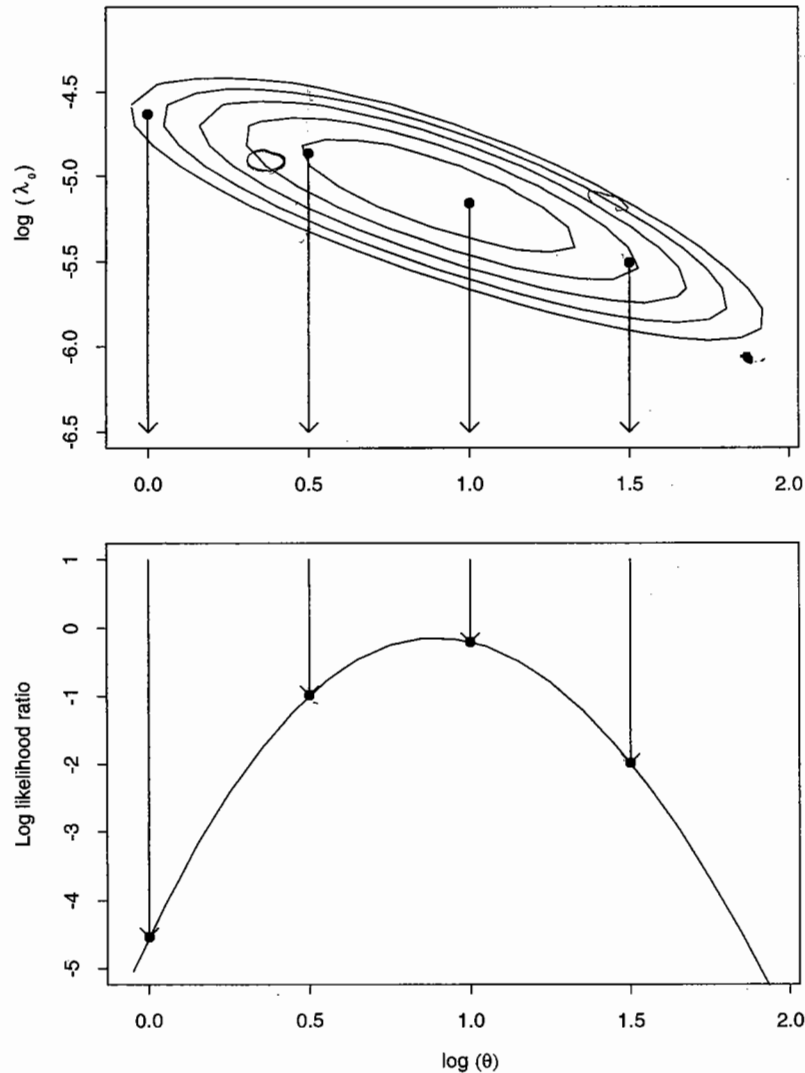


Fig. 13.1. Log likelihood surface for θ and λ (above) and profile log likelihood for θ (below).

This is exactly the same as a Bernoulli likelihood for the odds parameter

$$\Omega = \frac{\theta Y_1}{Y_0}$$

based on a split of D cases as D_1 exposed and $D_0 = D - D_1$ unexposed. It follows that estimation of θ using the profile log likelihood is equivalent to estimating the odds, Ω , in the binary model; the two estimates differ only by the known multiplier, Y_1/Y_0 .

From the Bernoulli likelihood, the most likely value of Ω is D_1/D_0 and the standard deviation of $\log(\Omega)$ is

$$\sqrt{\frac{1}{D_0} + \frac{1}{D_1}}$$

It follows that the most likely value of θ is

$$\frac{D_1/D_0}{Y_1/Y_0} = \frac{D_1/Y_1}{D_0/Y_0}$$

which is the ratio of the most likely values of the two rates and since $\log(\theta)$ differs from $\log(\Omega)$ only by a known constant, the shape of the log likelihoods are identical, and the standard deviation of $\log(\theta)$ is also

$$\sqrt{\frac{1}{D_0} + \frac{1}{D_1}}$$

Exercise 13.1. Calculate the maximum likelihood estimate of the rate ratio for the data of Table 13.1 and give 90% confidence limits.

For the calculation of p-values, the null hypothesis generally of interest is that the two rates are equal, so that $\theta_0 = 1$ and $\Omega_0 = Y_1/Y_0$. In terms of the corresponding risk parameter the null hypothesis is that

$$\pi_0 = \frac{\Omega_0}{1 + \Omega_0} = \frac{Y_1}{Y_0 + Y_1}$$

The score is

$$U = D_1 - D\pi_0,$$

which can be written as

$$U = D_1 - E_1$$

where $E_1 = D\pi_0$ is the expected number of exposed cases under the null hypothesis. The score variance is

$$V = D\pi_0(1 - \pi_0).$$

Exercise 13.2. Test the significance of the effect of low energy intake in the data of Table 13.1.

13.3 Conditional likelihood

The approach outlined above starts from the question: what is the probability that, during follow-up, D_0 events occur in the unexposed cohort and D_1 in the exposed cohort? The resulting likelihood involves not only the rate ratio θ (the parameter of interest), but also a nuisance parameter, λ_0 . Replacing the unknown nuisance parameter by its most likely value leads to the profile log likelihood for θ . This argument is appealing in that it closely follows the way in which cohort studies are designed and executed — we decide in advance upon the cohort to be followed and the duration of follow-up and wait to see how many disease events occur in different subgroups. However, it is not essential that the likelihood argument should correspond so closely with the study design. In particular, if some aspect of the result contains little or no information about the parameter of interest, then we are free to treat it as if it were fixed by the study design. The aim of such an argument, which is called a *conditional argument*, is to obtain a new probability model for the data which does not involve the nuisance parameter.

In this case the total number of cases tells us nothing about the effect of exposure, which depends on the split among cases between exposed and not exposed. We therefore take the total number of events as fixed, corresponding to a study in which the follow-up continues for just long enough for D events to be observed. The analysis of the study then concentrates on the split of cases between the exposed and unexposed sections of the cohort, and starts from the question: given that D failures occurred, what is the probability that D_0 of them occurred in the unexposed group and D_1 in the exposed group?

The split of the D failures between exposed and unexposed groups may be described using the binary probability model. This is illustrated in Fig. 13.2. The left-hand tree shows the observed split of the failures and the right-hand tree shows the expected split of cases. If Y_1 and Y_0 can be regarded as fixed, the odds that a case was exposed is

$$\Omega = \frac{\lambda_1 Y_1}{\lambda_0 Y_0} = \frac{\theta Y_1}{Y_0},$$

and the log likelihood for θ is

$$D_1 \log \left(\frac{\theta Y_1}{Y_0} \right) - D \log \left(1 + \frac{\theta Y_1}{Y_0} \right).$$

Thus regarding the number of cases as fixed leads directly to a *conditional* log likelihood which depends only upon θ . The log likelihood is conditional

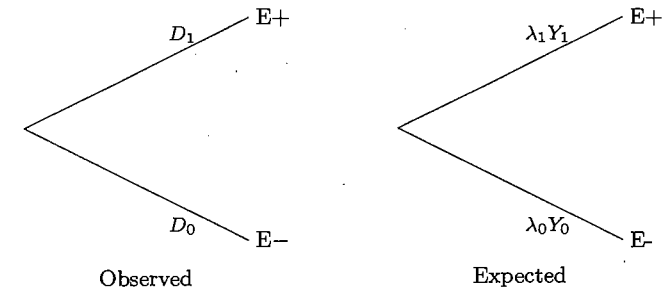


Fig. 13.2. The conditional argument.

in the sense that it takes as fixed an aspect of the data (the total number of events, D) that was, in reality, an unpredictable outcome of the study. In this case the profile and conditional likelihood approaches have led to the same log likelihood and, therefore, to identical estimates and confidence intervals, but in general this will not be the case.

The conditional approach always yields a true log likelihood, being based upon a probability (albeit a *conditional* probability) of observed data. Also, because this probability depends only on the parameter of interest, it can be used to calculate exact p -values and confidence intervals. In our current example, the probabilities for different splits of cases between exposed and unexposed groups, given θ , can be obtained from the binomial distribution. However, the conditional approach is not an automatic method, but relies on our ingenuity in recognizing a suitable conditional argument. Such arguments are not always possible. For example, it has not proved possible to find an argument which leads to a conditional likelihood for the *rate difference*, $\lambda_1 - \lambda_0$.

In contrast, the profile method has the considerable virtue that it can *always* be employed. Even if it is impossible to use an algebraic method to obtain an explicit formula for the profile log likelihood curve, the derivation of the curve numerically by the procedure illustrated in Fig. 13.1 can always be carried out by computer. The difficulty with this approach is that the profile curve is not necessarily a true log likelihood. However, in most situations it does approximately possess the properties of a true log likelihood. These properties can safely be assumed when the number of nuisance parameters is small in comparison with the total quantity of data.

We should note that our current use of the conditional approach requires $\lambda_0 Y_0$ and $\lambda_1 Y_1$, the expected numbers of cases in the two groups, to be constants not influenced by the study outcome. Although this is approximately true for the rare events usually studied by epidemiologists (see section 6.3), it may not be an acceptable argument when the probabilities of failure are high. In these cases, the likelihood derived in this chapter

can only be regarded as a profile likelihood and exact tests and confidence intervals are not available.

★ 13.4 Approximating profile log likelihoods

For the rate ratio it is possible to derive a *mathematical expression* for the profile log likelihood and hence find a Gaussian approximation from which approximate p-values and confidence intervals can be calculated in the usual way. This is not possible in general. The profile likelihood can always be computed by going through the steps indicated in Fig. 13.1, but the resulting curve usually cannot be represented by a simple algebraic expression. Fortunately some simple rules, derived from calculus, allow us to calculate Gaussian approximations to such profile log likelihoods, and hence algebraic expressions for M , S , U , and V , which we can go on to use in the usual way. These rules and their derivation are explained in Appendix C. Here we briefly summarize the most important rules.

An important general problem is the estimation of the difference between two parameters β_0 and β_1 when these are estimated from two independent bodies of data. If the log likelihood for β_0 has a Gaussian approximation defined by the most likely value M_0 and standard deviation S_0 and the approximation to the log likelihood for β_1 is defined by M_1 and S_1 , then the Gaussian approximation of the log likelihood for $\beta_1 - \beta_0$ has

$$\begin{aligned} M &= M_1 - M_0, \\ S &= \sqrt{(S_1)^2 + (S_0)^2}. \end{aligned}$$

The rate ratio is a special case of this more general problem since its logarithm may be written

$$\log\left(\frac{\lambda_1}{\lambda_0}\right) = \log(\lambda_1) - \log(\lambda_0)$$

and in Appendix C it is shown that these rules lead to the same Gaussian log likelihood approximation as we obtained earlier. Here we use them to approximate the profile log likelihood for the rate difference. The most likely value is the difference between the most likely values of the rates,

$$M = \frac{D_1}{Y_1} - \frac{D_0}{Y_0},$$

and, from Chapter 9, $S_1 = \sqrt{D_1}/Y_1$ and $S_0 = \sqrt{D_0}/Y_0$ so the value of S for the rate difference is

$$\sqrt{\frac{D_1}{(Y_1)^2} + \frac{D_0}{(Y_0)^2}}.$$

Exercise 13.3. Calculate an approximate 90% confidence interval for the difference between the rates using the data of Table 13.1.

A still more general problem concerns a weighted sum of parameters, of the form

$$W_1\beta_1 + W_2\beta_2 + W_3\beta_3 + \dots,$$

each β parameter again being estimated from independent bodies of data. The Gaussian approximation to the profile log likelihood for the weighted sum has

$$\begin{aligned} M &= W_1M_1 + W_2M_2 + W_3M_3 + \dots \\ S &= \sqrt{(W_1S_1)^2 + (W_2S_2)^2 + (W_3S_3)^2 + \dots}, \end{aligned}$$

where M_1, S_1, \dots etc. are the most likely values and standard deviations for β_1, \dots etc.. An example is the profile log likelihood for the cumulative failure rate. In Chapter 5 we defined the cumulative rate by

$$\lambda^1 T^1 + \lambda^2 T^2 + \dots$$

where $\lambda^1, \lambda^2, \dots$ are probability rates operating for time periods T^1, T^2, \dots . The cumulative rate is, therefore, a weighted sum of the form discussed in this section.

Exercise 13.4. Using the Gaussian approximation given in Chapter 9 for the log likelihoods for rate parameters, derive an expression for the Gaussian approximation to the profile log likelihood for the cumulative rate.

Solutions to the exercises

13.1 The most likely value of θ is

$$\frac{D_1/Y_1}{D_0/Y_0} = \frac{28/1857.5}{17/2768.9} = 2.48.$$

The standard deviation of the estimate of $\log(\theta)$, is

$$S = \sqrt{1/28 + 1/17} = 0.3075,$$

so that the 90% error factor for θ is

$$\exp(1.645 \times 0.3075) = 1.66.$$

The 90% confidence limits for the rate ratio are $2.48/1.66 = 1.49$ (lower limit) and $2.48 \times 1.66 = 4.12$ (upper limit).

13.2 The observed number of events in the low energy intake group is 28. There were 45 events in total and, under the null hypothesis, the probability of having been exposed is $\pi_0 = 1857.5/4626.4 = 0.402$. The score is

$$U = 28 - 45 \times 0.402 = 9.93,$$

and the score variance is

$$V = 45 \times 0.402 \times (1 - 0.402) = 10.81.$$

The score test is $(U)^2/V = 9.12$, giving $p \approx 0.003$.

13.3

$$M = \frac{28}{1857.5} - \frac{17}{2768.9} = 0.00893 \text{ (8.93 per 1000 person-years).}$$

$$S = \sqrt{\frac{28}{(1857.5)^2} + \frac{17}{(2768.9)^2}} = 0.00321 \text{ (3.21 per 1000 person-years).}$$

The 90% confidence interval is

$$M \pm 1.645S = 3.65 \text{ to } 14.2 \text{ per 1000 person-years.}$$

13.4 The log likelihood for λ^1 is approximated by a Gaussian curve with

$$M^1 = \frac{D^1}{Y^1}, \quad S^1 = \frac{\sqrt{D^1}}{Y^1}.$$

Similarly for $\lambda^2, \lambda^3, \dots$ etc. The weights are the durations of observation, T^1, T^2, \dots , so that the profile log likelihood for the cumulative rate has its maximum at

$$M = \frac{D^1}{Y^1} T^1 + \frac{D^2}{Y^2} T^2 + \dots$$

and the standard deviation of the Gaussian approximation is

$$S = \sqrt{D^1 \left(\frac{T^1}{Y^1}\right)^2 + D^2 \left(\frac{T^2}{Y^2}\right)^2 + \dots}$$

Note that, as we narrow the time bands to clicks, the ratio T/Y approaches $1/N$, where N is the number of subjects under observation during the click. In these circumstances, M is the Aalen-Nelson estimate of the cumulative rate and S may be used to calculate an approximate confidence interval.

14 Confounding and standardization

14.1 Confounding

Epidemiological studies generally involve comparing the outcome over a period of time for groups of subjects experiencing different levels of exposure. Such studies are usually not controlled experiments but 'experiments of nature' of which the epidemiologist is a passive observer. In such investigations, there is always the possibility that an important influence on the outcome, which would have been fixed in a controlled experiment, differs systematically between the comparison groups. It is then possible that part of an apparent effect of exposure is due to these differences, and the comparison of the exposure groups is said to be *confounded*. Statistical approaches to dealing with the problem of confounding aim to correct, during analysis, for such deficiencies in the design of experiments of nature.

A particularly important potential confounding variable (or *confounder* in many epidemiological studies is the age of subjects. We shall consider an example in which subjects in a follow-up study are classified according to whether their age at the start of follow-up was less than 55 years or 55 years or more. Suppose that the breakdown between the two age groups is 0.8 : 0.2 and that the conditional probability of failure is 0.1 in the first age group and 0.3 in the second. When age is ignored the overall or *marginal* probability of failure is

$$(0.8 \times 0.1) + (0.2 \times 0.3) = 0.14.$$

Now suppose that the age distribution differs between the two exposure groups, being 0.8 : 0.2 in the not exposed group but 0.4 : 0.6 in the exposed group (see Fig. 14.1). The marginal probability of failure for the unexposed group is still

$$(0.8 \times 0.1) + (0.2 \times 0.3) = 0.14,$$

but for the exposed group it is now

$$(0.4 \times 0.1) + (0.6 \times 0.3) = 0.22.$$

The marginal probabilities of failure now suggest an apparent effect of

13 Likelihoods for the rate ratio

13.1 Two Rates and a Rate Ratio

- The article referred to in the footnote had Clayton as co-author.¹
- “This (the one shown) is the likelihood for any specified pair of values for the two parameters λ_0 and λ_1 . [...] Its maximum value is achieved when these parameters take values equal to the corresponding observed rates ($\widehat{\lambda}_0$ and $\widehat{\lambda}_1$)”

¹Morris JN, Marr JW, Clayton DG. Diet and heart: a postscript. Br Med J. 1977 Nov 19;2(6098):1307-14. During 1956-66, 337 healthy middle-aged men in London and south-east England participated in a seven-day individual weighed dietary survey. By the end of 1976, 45 of them had developed clinical coronary heart disease (CHD) which showed two main relationships with diet. Men with a high energy intake had a lower rate of disease than the rest, and, independently of this, so did men with a high intake of dietary fibre from cereals. Energy intake reflects physical activity, but the advantage of a diet high in cereal fibre cannot be explained; there was no evidence that the disease was associated with consumption of refined carbohydrates. Fewer cases of CHD developed among men with a relatively high ratio of polyunsaturated to saturated fatty acids in their diet, but the difference was not statistically significant.

The individual data are available in the dataset `diet` in the `Epi` package (co-developed and) maintained by Bendix Carstensen – and he uses it to illustrate the Lexis ‘machinery’. As per his description...

The diet data frame has 337 rows and 14 columns. The data concern a subsample of subjects drawn from larger cohort studies of the incidence of coronary heart disease (CHD). These subjects had all completed a 7-day weighed dietary survey while taking part in validation studies of dietary questionnaire methods. Upon the closure of the MRC Social Medicine Unit, from where these studies were directed, it was found that 46 CHD events had occurred in this group, thus allowing a serendipitous study of the relationship between diet and the incidence of CHD.

Format: This data frame contains the following columns: **id:** subject identifier, a numeric vector. **doe:** date of entry into follow-up study, a Date variable. **dox:** date of exit from the follow-up study, a Date variable. **dob:** date of birth, a Date variable. **y:** - number of years at risk, a numeric vector. **fail:** status on exit, a numeric vector (codes 1, 3, 11, and 13 represent CHD events) **job:** occupation, a factor with levels Driver Conductor Bank worker **month:** month of dietary survey, a numeric vector **energy:** total energy intake (KCal per day/100), a numeric vector **height:** (cm), a numeric vector **weight:** (kg), a numeric vector **fat:** fat intake (g/day), a numeric vector **fibre:** dietary fibre intake (g/day), a numeric vector **energy.grp:** high daily energy intake, a factor with levels ≤ 2750 KCal > 2750 KCal **chd:** CHD event, a numeric vector (1=CHD event, 0=no event)

Source: The data are described and used extensively by Clayton and Hills, Statistical Models in Epidemiology, Oxford University Press, Oxford:1993. They were rescued from destruction by David Clayton and reentered from paper printouts.

Morris (died 2009): an influential epidemiologist; focused on physical activity: see e.g., <http://www.ft.com/cms/s/2/e6ff90ea-9da2-11de-9f4a-00144feabdc0.html> [http://en.wikipedia.org/wiki/Jerry_Morris_\(physician\)](http://en.wikipedia.org/wiki/Jerry_Morris_(physician)) <http://ije.oxfordjournals.org/cgi/content/full/36/6/1184>

This begs the question as to whether the MLE of $\theta = \lambda_1/\lambda_0$ is $\widehat{\lambda}_1/\widehat{\lambda}_0$. It is in this case, but is it always the case?

- “The 90% confidence intervals for the two rates do not overlap and it might seem that the data support the proposition that the two rates are different. In general, however, the degree of overlap of confidence intervals is a poor criterion for comparing rates. If the interval in the high intake group had stretched from, say, 3.0 to 12.0 then it could be argued that, since values of the rate parameter in the range from 11.1 to 12.0 are included in both intervals, the data do not support the idea that the rates are different. The flaw in this argument is that this common region is at the extreme of both ranges; the support for the proposition that the rates are similar requires two rather poorly supported propositions to hold simultaneously.”

This flaw is often missed: see Wolfe R, Hanley J *If we’re so different, why do we keep overlapping? When 1 plus 1 doesn’t make 2*. Canadian Medical Association Journal. 2002 Jan 8;166(1):65-6. [find it under Publications in JH’s main page]. or (directly) here

http://www.medicine.mcgill.ca/epidemiology/hanley/Reprints/CIs_Wolfe_Hanley_CMAJ.pdf]

- “The way to approach such problems [estimation of θ] is to reparametrize the model...”

One could also first draw the iso-log-Likelihood (LL) contours of

$$LL(\lambda_0, \lambda_1) = D_0 \log(\lambda_0) - \lambda_0 Y_0 + D_1 \log(\lambda_1) - \lambda_1 Y_1,$$

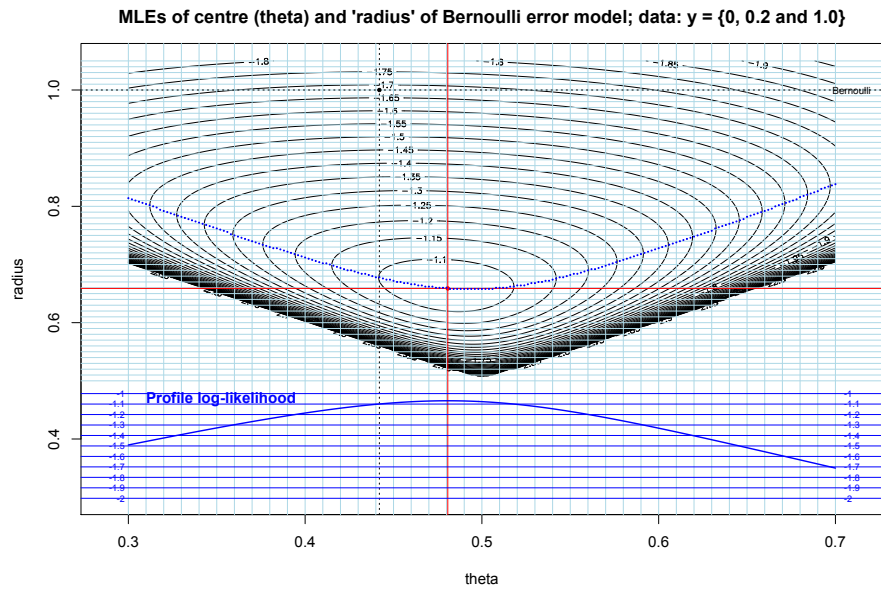
over a grid of (λ_0, λ_1) values, then draw the lines $\lambda_1 = \theta \times \lambda_0$ as rays across this grid for various values of θ , say $\theta = \{2^{-2}, 2^{-1}, \dots, 2^3\}$, say, and finally to find the maximum L over each line, and finally to plot these maxima as a function of θ .

13.2 Profile Likelihood

- “In most situations [the profile log likelihood] behaves in exactly the same way as a log likelihood”.

Please check out the situations where it does not.

- Our earlier example, from Daniel Bernoulli in 1778, could have benefitted from a ‘profiling’ approach to eliminating a nuisance parameter. Remember that Bernoulli has 2 parameters: the centre, θ , of the semi-elliptical error distribution, and the ‘controlling radius’, r , which he fixed at $r = 1$. In 2016 we plotted the contours of the likelihood and estimated the MLE of both simultaneously. But we could also have used the profile likelihood to get rid of the r parameter. See diagram in next column.



- “In the case of the the rate ratio, this process is simplified since the derivation of the profile log likelihood can be carried out algebraically, leading to a mathematical equation for the curve. The value of λ_0 which maximizes the log likelihood for any given value of θ may be shown to be...”

The full log-likelihood for (θ, λ_0) is

$$LL(\theta, \lambda_0) = D \log(\lambda_0) + D_1 \log(\theta) - \lambda_0 Y_0 - \theta \lambda_0 Y_1.$$

So, with θ fixed, its derivative with respect to λ_0 is

$$dLL(\theta, \lambda_0)/d\lambda_0 = D/\lambda_0 - Y_0 - \theta Y_1,$$

with its root at

$$\lambda_0 = D/(Y_0 + \theta Y_1).$$

[Incidentally, this solution makes *intuitive sense*, since we can think of $Y_0 + \theta Y_1$ as the number of ‘reference-category-equivalent’ person years: Y_1 *person years at a (relative) rate of θ should produce as many events as θY_1 person years would at a (reference) rate of 1.* So, together, the combined Y_0 and Y_1 person years, in the reference and index categories respectively, can be expected to produce in total as many total cases as $Y_0 + \theta Y_1$ persons years in the reference category would.]

Upon substituting this expression for λ_0 into $LL(\theta, \lambda_0)$, and discarding terms that do not involve θ , we get, as C&H do, the Binomial-looking likelihood

$$LL_{profile}(\theta) = D_1 \log(\theta) - D \log(Y_0 + \theta Y_1).$$

This can be rewritten² as

$$LL_{profile}(\theta) = D_1 \log\left(\theta \times \frac{Y_1 Y_0}{Y_0 Y_1}\right) - D \log\left(\frac{Y_0 + \theta Y_1}{Y_0} Y_0\right),$$

and the part that involves θ can be written as

$$LL_{profile}(\theta) = D_1 \log\left(\theta \frac{Y_1}{Y_0}\right) - D \log\left(1 + \theta \frac{Y_1}{Y_0}\right),$$

or as the binomial likelihood for the odds parameter Ω ,

$$LL_{profile}(\Omega) = D_1 \log(\Omega) - D \log(1 + \Omega),$$

with

$$\Omega = \theta \frac{Y_1}{Y_0}.$$

- “From the Bernoulli likelihood, the most likely value of Ω is D_1/D_0 .”

This is their way of saying $\hat{\Omega}_{ML} = D_1/D_0$.

- “The standard deviation of $\log(\Omega)$ is ... ”.

Again, they mean the standard deviation of $\log \hat{\Omega}_{ML}$. We know from earlier in 601 – and the use of the two applications of the Delta method (first for $\frac{\hat{\pi}}{1-\hat{\pi}}$ and then for the log – that the variance of a logit, i.e. of a log-odds, is

$$Var\left[\log\left(\frac{\hat{\pi}}{1-\hat{\pi}}\right)\right] = Var[\log \hat{\Omega}] = Var[\hat{\pi}] \times \left(\frac{d \log \Omega}{d \Omega}\right)^2 \times \left(\frac{d \Omega}{d \pi}\right)^2$$

- “It follows that the most likely value of θ is ... ”

$$\hat{\theta} \frac{Y_1}{Y_0} = \frac{D_1}{D_0} \rightarrow \hat{\theta} = \frac{D_1}{D_0} \div \frac{Y_1}{Y_0} = \frac{D_1}{Y_1} \div \frac{D_1}{Y_0} = \frac{\hat{\lambda}_1}{\lambda_0}$$

“... which is the ratio of the most likely values of the two rates.”

²JH thinks that there may be a typo (a minus instead of a plus) in C&Hs’ addition.

Supplementary Exercise 13.1 [Daniel Bernoulli](#), revisited.

Compute the profile log-likelihood for the centre, θ , of Daniel Bernoulli's semi-circular (technically, semi-elliptical) distribution, obtained by 'profiling out' the radius parameter r .

Remember that the pdf is

$$pdf(y) = \frac{2}{\pi r^2} \{r^2 - (y - \theta)^2\}^{1/2}$$

and that Bernoulli's 3 datapoints were $y_1 = 0$, $y_2 = 0.2$, and $y_3 = 1$.

Since there does not seem to be a way to derive the profile log likelihood algebraically, you will need to proceed numerically: for each possible value of θ in `seq(0.3, 0.7, 0.01)` say, numerically maximize `log-likelihood[theta, r]` with respect to r ; then plot the resulting set of maxima against the θ values in `seq(0.3, 0.7, 0.01)`. Check your profile log likelihood against the one shown in the previous page.

Supplementary Exercise 13.2 Score, score variance, and score test

Derive the expressions for the score and score variance, given at the bottom of C&H page 127. If you need to, consult [C&H chapter 11.4, pp 102-104](#).

13.3 Conditional Likelihood

• This follows directly from deciding to condition on the sum D of 2 independent Poisson random variables D_1 and D_0 :

$$D_1 \sim \text{Poisson}(\mu_1); D_0 \sim \text{Poisson}(\mu_0) \rightarrow (D_1 | D) \sim \text{Binomial}\left(D, \pi = \frac{\mu_1}{\mu_1 + \mu_0}\right)$$

In our case, $\mu_1 = \lambda_1 Y_1$ and $\mu_0 = \lambda_0 Y_0$, so

$$(D_1 | D) \sim \text{Binomial}\left(D, \pi = \frac{\lambda_1 Y_1}{\lambda_0 Y_0 + \lambda_1 Y_1} = \frac{\theta Y_1}{Y_0 + \theta Y_1}\right).$$

Clearly, then,

$$\frac{D_1}{D_0} = \frac{\hat{\pi}}{1 - \hat{\pi}} = \frac{\hat{\theta} Y_1}{Y_0} \rightarrow \hat{\theta} = \frac{D_1}{D_0} \div \frac{Y_1}{Y_0} = \frac{D_1}{Y_1} \div \frac{D_0}{Y_0} = \frac{\widehat{\lambda}_1}{\widehat{\lambda}_0}.$$

So, in this instance, the conditional likelihood is exactly the same as the profile likelihood. And the ML estimators and the variances (approx. and exact) derived from curvature of the log-likelihood, also coincide.

• **Extra:** TOWARDS FITTING θ VIA A GENERALIZED LINEAR MODEL.

The above formulation of the odds $\Omega = \theta \times \frac{Y_1}{Y_0}$ in both the profile and conditional likelihoods lends itself to a regression approach to the fitting of θ . We have that

$$D_1 | D \sim \text{Binomial}\left(D, \pi = \frac{\theta Y_1}{Y_0 + \theta Y_1}\right) \sim \text{Binomial}\left(D, \Omega = \theta \frac{Y_1}{Y_0}\right).$$

We can write this as

$$\frac{E[D_1 | D]}{D - E[D_1 | D]} = \theta \left(\frac{Y_1}{Y_0}\right),$$

or as

$$\log\left(\frac{E[D_1 | D]}{D - E[D_1 | D]}\right) = \log(\theta) + \log\left(\frac{Y_1}{Y_0}\right) = \beta \times X + 1 \times K.$$

where $\beta = \log(\theta)$ is a regression parameter to be estimated, $X = 1$, and $K = \log(Y_1/Y_0)$ is a **known constant**. In the language of generalized models, having $\log(\mu_1/[D - \mu_1])$ on the left hand side means that we are modeling the *logit* of $\mu_{Y|X}$, i.e., using the 'logit link', and we already have established that $D_1 | D \sim \text{Binomial}(D, \pi)$, i.e., the 'distribution' or the 'error structure' or 'family' is *Binomial*. Lastly, even though we represented the 'regression equation' as having two terms, the $\beta \times X$ and the $1 \times K$, the *regression coefficient associated with K is known to be unity (1)*. In the GLM language, K is called an '**offset**', i.e., it is a variate whose coefficient is **known to be 1**: we force this coefficient value to be 1, and we don't allow the software to estimate it³. Technically, it is part of the regression equation, but it used to be⁴ put in a separate part in the syntax of the software. For example, in R, one would fit the above logistic model as follows:

³In this very simple example, with just one observation, K may look like an ordinary intercept, but remember that it is one whose value we *know*. Moreover, if there are several different observations, as there will be in Chapter 15, then K will vary from observation to observation, each time with a coefficient of 1.

⁴Nowadays, it can be written as `-1 + X + offset(log(K))`

```

D1=c(28); D=c(45); X=c(1); K=c(log(1857.5/2768.9));
fit=glm(cbind(D1,D-D1)~1+X,family=binomial,offset=K)
-----^-----
      # format for grouped (Binomial) data
      # for Bernoulli (ie y=0/1) data, use y ~ -1+X etc
summary(fit)  [ Number of Fisher Scoring iterations: 3 ]
Deviance Residuals: [1]  0

Coefficients:
 Estimate Std. Error z value Pr(>|z|)
X    0.8982    0.3075    2.921  0.00349 **
(Dispersion parameter for binomial family taken to be 1)

Null deviance: 8.889  on 1  degrees of freedom
Residual deviance: 0.000  on 0  degrees of freedom. AIC: 6.2087

beta.hat=log.theta.hat=fit$coefficients
theta.hat=exp(log.theta.hat)
Var.beta.hat = summary(fit)$cov.unscaled[1,1]

c(beta.hat,theta.hat,Var.beta.hat)    0.898 2.455 0.094538

(28/1857.5)/(17/2768.9) = 2.455 #C&Hs' 2.48 slightly in error
1/28 + 1/17 = 0.09453782; sqrt(1/28 + 1/17) = 0.30747

```

The glm routine produces the same statistics as the hand fitting used in exercise 13.1.

NOTE: We would have obtained the same output had we used the statement:
`glm(cbind(D1, D - D1) ~ 1, family = binomial, offset = K)`

• **EXTRA:** C= CONDITIONAL; U=UNCONDITIONAL.

POISSON-BASED INFERENCE FOR RATE RATIO $\theta = \frac{\lambda_1}{\lambda_0} : \hat{\theta}_c = \hat{\theta}_u$.

IS THE SAME TRUE MORE BROADLY? OR IS POISSON A SPECIAL CASE?

Consider the comparison of two binomials with unknown parameter values π_1 and π_0 , using the odds ratio $\psi = \frac{\pi_1/(1-\pi_1)}{\pi_0/(1-\pi_0)}$ as the comparative parameter of interest.

Let's say the data consist of y_1/n_1 and y_0/n_0 .

Then, the log-likelihood is

$$l[\pi_1, \pi_0] = y_1 \log(\pi_1) + (n_1 - y_1) \log(1 - \pi_1) + y_0 \log(\pi_0) + (n_0 - y_0) \log(1 - \pi_0).$$

Supplementary Exercise 13.3 [The 1954 Field Trial of the Salk Poliomyelitis Vaccine](#)⁵

Summary of Study Cases by Diagnostic Class and Vaccination Status (Rates per 100,000): **Placebo control areas: All Reported Cases***

Gp.	SP	A_c	A_r	T_c	T_r	PP_c	PP_r	NP_c	NP_r	FP_c	FP_r
V	200,745	82	41	57	28	33	16	24	12	-	-
Pl	201,229	162	81	142	71	115	57	27	13	4	2
NI	338,778	182	54	157	46	121	36	36	11	-	-
IV	8,484	2	24	2	24	1	12	1	12	-	-
All	749,236	428	57	358	48	270	36	88	12	4	1

* V, Pl, NI, IV: Vaccinated, Placebo, Not Inoculated, and Incomplete Vaccinations groups.

SP: Study population (number of children);

A_c and A_r : All reported cases and rate;

T_c and T_r : Total poliomyelitis cases and rate;

PP_c and PP_r : Paralytic Poliomyelitis cases and rate;

NP_c and NP_r : Non-Paralytic poliomyelitis cases and rate;

FP_c and FP_r : Fatal poliomyelitis cases and rate.

Some 70 reported cases were deemed to be “Not Polio” (25 in V, 20 in Pl, and 25 in NI, are shown in Meier’s table, but omitted here because of space constraints. Meier’s Source: Adapted from Francis (1955), Tables 2 and 3.

The data are based on followup from the children (in grades 1 2 and 3), randomized and vaccinated in the months before the 1954 summer vacation, and followed to the end of December 1954; i.e. over one ‘polio season’.

- i. Repeat C&H’s exercises 13.1 and 13.3 using the data of paralytic polio (PP) instead of those in C&H Table 13.1, i.e., compute point and interval estimates of the *difference* in, and the *ratio* of, the rates of paralytic polio with the Salk vaccine and Placebo [first 2 rows].

Francis (1955) also used a conditional approach when computing their confidence intervals. See (on the top right corner of the BIOS601 website, under Applications) the chapter on Statistical Methods. This chapter says... (note their use of λ for rate ratio. We use it for rate.)

With M =number of vaccinated persons; N = number of persons in corresponding control group; m = number of cases among vaccinated persons [treated as the realization of a Poisson random variable]; n =number of cases among persons in

corresponding control group [also treated as the realization of a Poisson random variable]; T =total number of persons ($T = M + N$); t = total number of cases ($t = m + n$), and $\lambda = RateRatio$, ...

the probability of m vaccinated cases, given a total of t cases, may be expressed as:

$${}^tC_m \times \left\{ \frac{M\lambda}{M\lambda + n} \right\}^m \times \left\{ \frac{N}{M\lambda + n} \right\}^{t-m}$$

This is the binomial distribution with probability parameter

$$\frac{M\lambda}{M\lambda + N}$$

- ii. In this example, how similar would the CI have been if they had used an *unconditional* approach to the RateRatio? Is this similarity because of the large numbers of events, or because of something else?
- iii. As is clear from the headline,⁶ journalists, and the public, are more interested in the percent efficacy, $100 \times (1 - RateRatio)$, than in the RateRatio. Therefore, convert the CI for the RateRatio into a CI for the percent efficacy.



⁶There are 3 virus strains; results in table are not strain-specific. 90% in headline is.

⁵Paul Meier. Chapter 2 [The Biggest Public Health Experiment Ever](#); in Tanur JM et al. (Editors) *Statistics: A Guide to the Unknown*. Holden-Day San Francisco 1972. More historical information [here](#) and (under ‘1954 TRIAL OF SALK POLIO VACCINE’) [here](#).

Supplementary Exercise 13.4 Time-specific Rate Ratios in the ERSPC

THE NEW ENGLAND JOURNAL OF MEDICINE

ORIGINAL ARTICLE

Screening and Prostate-Cancer Mortality in a Randomized European Study

Fritz H. Schröder, M.D., Jonas Hugosson, M.D., Monique J. Roobol, Ph.D., Teuvo L.J. Tammela, M.D., Stefano Ciatto, M.D., Vera Nelen, M.D., Maciej Kwiatkowski, M.D., Marcos Lujan, M.D., Hans Lilja, M.D., Marco Zappa, Ph.D., Louis J. Denis, M.D., Franz Recker, M.D., Antonio Berenguer, M.D., Liisa Määttänen, Ph.D., Chris H. Bangma, M.D., Gunnar Aus, M.D., Arnauld Villers, M.D., Xavier Rebillard, M.D., Theodoros van der Kwast, M.D., Bert G. Blijenberg, Ph.D., Sue M. Moss, Ph.D., Harry J. de Koning, M.D., and Anssi Auvinen, M.D., for the ERSPC Investigators*

ABSTRACT

BACKGROUND

The European Randomized Study of Screening for Prostate Cancer was initiated in the early 1990s to evaluate the effect of screening with prostate-specific-antigen (PSA) testing on death rates from prostate cancer.

METHODS

We identified 182,000 men between the ages of 50 and 74 years through registries in seven European countries for inclusion in our study. The men were randomly assigned to a group that was offered PSA screening at an average of once every 4 years or to a control group that did not receive such screening. The predefined core age group for this study included 162,243 men between the ages of 55 and 69 years. The primary outcome was the rate of death from prostate cancer. Mortality follow-up was identical for the two study groups and ended on December 31, 2006.

RESULTS

In the screening group, 82% of men accepted at least one offer of screening. During a median follow-up of 9 years, the cumulative incidence of prostate cancer was 8.2% in the screening group and 4.8% in the control group. The rate ratio for death from prostate cancer in the screening group, as compared with the control group, was 0.80 (95% confidence interval [CI], 0.65 to 0.98; adjusted P=0.04). The absolute risk difference was 0.71 death per 1000 men. This means that 1410 men would need to be screened and 48 additional cases of prostate cancer would need to be treated to prevent one death from prostate cancer. The analysis of men who were actually screened during the first round (excluding subjects with noncompliance) provided a rate ratio for death from prostate cancer of 0.73 (95% CI, 0.56 to 0.90).

CONCLUSIONS

PSA-based screening reduced the rate of death from prostate cancer by 20% but was associated with a high risk of overdiagnosis. (Current Controlled Trials number, ISRCTN49127736.)

The authors' affiliations are listed in the Appendix. Address reprint requests to Dr. Schröder at the Erasmus Medical Center, P.O. Box 2040, Rotterdam 3000 CA, the Netherlands, or at secr.schroeder@erasmusmc.nl.

*Members of the European Randomized Study of Screening for Prostate Cancer (ERSPC) are listed in the Appendix.

This article (10.1056/NEJMoa0810084) was published at NEJM.org on March 18, 2009.

N Engl J Med 2009;360:1320-8. Copyright © 2009 Massachusetts Medical Society.

Table 1. Numbers of Subjects and Results of Screening, According to Study Center.*

Variable	The Netherlands November 1993– March 2000	Belgium June 1991– December 2003	Sweden June 1991– December 2003	Finland January 1996– January 1999	Italy October 1996– October 2000	Spain February 1996– June 1999	Switzerland September 1998– August 2003	Total June 1991– December 2003
Total no. of subjects	34,833	8562	11,852	80,379	14,517	2197	9903	162,243
Screening group — no. (%)	17,443 (50.1)	4307 (50.3)	5,901 (49.9)	31,970 (39.8)	7,265 (50.0)	1056 (48.1)	4948 (50.0)	72,890 (44.9)
Control group — no. (%)	17,390 (49.9)	4255 (49.7)	5,951 (50.1)	48,409 (60.2)	7,252 (50.0)	1141 (51.9)	4955 (50.0)	89,353 (55.1)

As JH points out below, the 20% reduction in prostate cancer mortality in the ERSPC is not a very meaningful figure. This use of a single average reminded him of Francis Galton's 1889 complaint: 'It is difficult to understand why statisticians commonly limit their inquiries to Averages, and do not revel in more comprehensive views. Their souls seem as dull to the charm of variety as that of the native of one of our flat English counties, whose retrospect of Switzerland was that, if its mountains could be thrown into its lakes, two nuisances would be got rid of at once.'

Mortality reductions produced by sustained prostate cancer screening have been underestimated

James A Hanley

J Med Screen 2010;17:147–151
DOI: 10.1258/jms.2010.010005

Background The recently published European Randomized Study of Screening for Prostate Cancer (ERSPC) reported prostate specific antigen (PSA)-based screening to have reduced the prostate cancer death rate by only 20%. However, this is an underestimate caused by (i) including in the 20% the years before the impact of the first screen becomes manifest, and (ii) not having full information for the follow-up years where the effects of the screening are most apparent. This paper provides a re-analysis of the results using time-specific measures, which avoid the first of these sources of error.

Methods Mortality rate ratios for follow-up years 1–12 were derived from the yearly numbers of prostate cancer deaths and numbers of men being followed in each arm of the ERSPC. To reduce statistical noise, they were based on moving three-year intervals, and a smooth rate ratio curve was fitted to the yearly data, in order to measure the steady state reduction in mortality and to identify the time at which it reached this level.

Results The re-analysis suggests that the sustained reduction in prostate cancer mortality may be more than 50%.

Conclusion Re-analysis of the ERSPC data suggests that if screening is carried out for several years, and if follow-up is pursued until the reduction becomes manifest, the reduction in mortality will be 50–60%. An analysis that includes the 2007–2008 follow-up data is required to quantify more precisely the impact of this intervention.

See end of article for author's affiliations

Correspondence to: James A Hanley, Department of Epidemiology, Biostatistics and Occupational Health, Faculty of Medicine, McGill University, Montreal, Québec, Canada H3A 1A2; james.hanley@mcgill.ca

Accepted for publication 28 April 2010

INTRODUCTION

The European Randomized Study of Screening for Prostate Cancer (ERSPC), which began enrolment 19 years ago, accrued 162,000 men. The ERSPC publication, in March 2009,¹ reported a reduction in prostate cancer mortality due to screening of 20%. This disappointing result has prompted a number of organizations and authorities to rethink their prostate cancer screening efforts and their public health messages.

However, the 20% reduction is a substantial underestimate, for two reasons. First, there is a considerable delay between the time screening starts and the time the effect is expected to be observed; the estimated 20% is an average of the null reductions in years 1–7, before benefits could become apparent, and the substantial reductions that began to appear from year 8 onwards. Second, the (proportional-hazards-type) summary measure (the 20%) is sensitive to the duration of follow-up, which closed at the end of 2006, after an average of just nine years of follow-up (range 3–15). A re-analysis of these ERSPC data that uses yearly rate ratios to avoid these two sources of error suggests a mortality reduction, due to screening, of more than 50%. However, a more precise measure will not be available until the critical data from 2007 and 2008 (and beyond) are included in the analysis.

METHODS

Five randomized trials of prostate cancer screening have now been reported. The numbers of men invited to the screening arm in the two Swedish studies^{2,3} were 1500 and 2400, respectively. The Quebec⁴ and USA⁵ studies enrolled a combined total of 123,000 men (69,000 in the combined screening arms), but in each of these two studies the actual screening activities in the screening and control arms differed so little that at best only a small difference in prostate cancer mortality could be expected. The ERSPC enrolled 162,000 men aged 55–69 years at intake. The larger sample size and substantial difference in the participation rates in the two arms meant that it has considerably greater resolving power.

In the ERSPC report, the effect of screening on prostate cancer mortality was expressed as one number, derived from the numbers of prostate cancer deaths over the entire period of observation available for each man (range 3–15, average 9 years). Over this period, there were 214 prostate cancer deaths in 643,401 man-years of observation in the screening group and 326 in 785,585 man-years in the control group. These are the basis for the reported rate ratio of 0.80, and the conclusion that 'prostate specific antigen (PSA)-based screening reduced the rate of death from prostate cancer by 20%' (95% CI: 2–35%). The article in the *New England*

Exercise

- i. Split the follow-up into two six-year intervals, 1-6 and 7-12, and compute one rate ratio, and, from it, one estimated percent reduction – and associated 95% CI – for each interval. Carry out the calculations in two ways, i.e., using an *unconditional* and a *conditional* approach.
- ii. Why did the numbers of men being followed (or equivalently, the numbers of person years) fall off so much over the 12 years of followup? [Hint: Refer to Table 1 and to the statement “the study was initiated in the early 1990s ... Mortality follow-up ended on December 31, 2006”]

Supplementary Exercise 13.5 Women are Safer Pilots

LONDON- Initial results of a study by Britain’s Civil Aviation Authority shows that women behind the controls of a plane might be safer than men. The study shows that male pilots in general aviation are more likely to have accidents than female pilots. Only 6 per cent of Britain’s general aviation pilots are women. According to the aviation magazine Flight International, there have been 138 fatal accidents in general aviation in the last 10 years, and only two involved women - less than 1.5 per cent of the total.

Woman News, page F1 The Montreal Gazette, August 21st, 1995

In this example, since we do not know the absolute sizes of the 2 person-time denominators, and thus cannot compute absolute rates, or the difference in rates, we are limited to an analysis of the Rate *Ratio*.

The large-sample unconditional methods for obtaining a CI for a rate ratio are both tractable and accurate when there are enough events in each of the compared categories. But in this example, and in supp. exercise 13.4, the small number of events in one of the categories (2 in this example, 0 in the next example) renders large-sample methods inaccurate or even impossible. In such situations, the conditional approach, in which one bases the inference on the distribution of the number of events in one category, conditional on the sum of the numbers of events in the two categories, is one way around this problem (we use a similar conditioning strategy when dealing with Fisher’s exact test). As C&H tell us at the top of p. 129, the profile likelihood – which has a binomial form – is the same as the conditional likelihood, and thus the same inference, in this type of example. But can we approximate this ‘binomial likelihood’ by a ‘Normal approximation to binomial likelihood’ (as C&H do in their example in Chapter 13⁷) and still have accurate answers? In order to compare inferences based on an exact-conditional versus approximate-conditional approach to this particular example, we will compute interval-estimates for the ratio of the rates of accidents in women relative to men pilots using different approaches.

For simplicity, in what follows, assume that on average, women pilots fly just as many hours as the men pilots, and that all other relevant factors are equal, although they probably are not! – the true denominator ratio is probably more extreme than 6:94.

- i. Compute a 90% frequentist interval for the rate ratio θ by treating the

⁷The Spiegelhalter et al. text routinely uses a ‘normal likelihood’ (and ‘normal prior’).

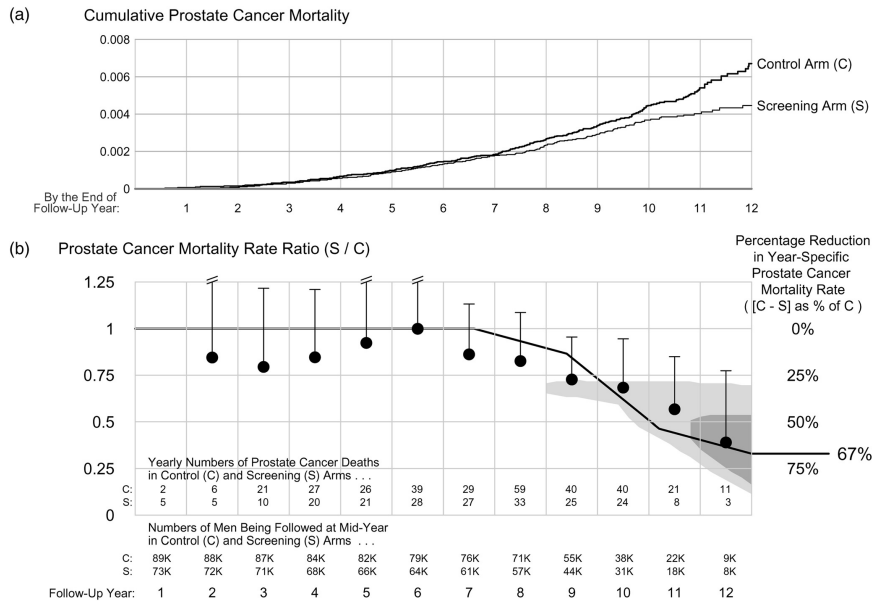


Figure 1 Comparison of prostate cancer mortality rates in two arms of European Randomized Study of Screening for Prostate Cancer (ERSPC). The graphs and numbers in this figure are based on the individual-patient data extracted from the individual-level postscript comments used in Figure 2 of the NEJM report. For details on how these individual data were extracted, see the Methods section of the present report. (a) Cumulative mortality curves, presented in the same format as in the original publication. As noted by the authors, ‘the rates of [prostate cancer] death in the two study groups began to diverge after seven to eight years and continued to diverge further over time’. However, they included the years of zero effect in their estimate of a reduction of overall average mortality of 20% [mortality rate ratio 0.80]. This is not an appropriate measure of the impact of screening, since the numbers of cures attributable to the screening in year 1 to year T only become apparent [as lower mortality rates in the screened than the control arm] in year (1 + T) to year (T + T?). Note that T varied somewhat across the seven ERSPC countries, and is used in a generic sense here. (b) Yearly prostate cancer mortality rate ratios, used for re-analysis. These are designed to measure the timing and extent of the prostate cancer mortality reduction in years (1 + T) to (T + T?) as a result of the screening in years 1 to T. Each rate ratio was calculated by dividing the observed rate of prostate cancer deaths in the screening arm by the corresponding rate in the control arm. The rate ratio shown above a given year is based on the data for that year together with the data in the years immediately preceding and following it. The upper end of each vertical line denotes the upper 95% limit of the percentage reduction in prostate-cancer mortality; the reductions in the three-year intervals centered on years 9 and beyond are statistically significant. The dotted line, with an asymptote of 67%, beginning at 12 years, was fitted using the method of maximum likelihood (see Appendix A). The two shaded regions represent the 50% and 80% confidence regions for these two parameters. The 80% CI associated with the 67% asymptote, derived from the vertical range of the lighter grey region at 12 years, is 30–89%. The results of the re-analysis using time-specific rate ratios indicate that the cures attributable to the screening in study year t only begin to become statistically apparent by year t + 7 and later. They also indicate that those in the control arm who died (or will die) of prostate cancer in years 8–12 of the study, possibly as many as half of them would not have died of prostate cancer had they been offered the programme. The 25–60% reductions seen in years 8–12 of the study suggest a much greater number of cures attributable to the screening in year 1 to year T than the single overall 20% figure reported in the original article, but further follow-up data are required to make a precise estimate.

observed 2:136 split of the 138 cases as the realization of a binomial random variable, with $n = 138$, $\pi = \frac{6\theta}{6\theta+94}$. Do so by converting the 90%CI for π into a 90% CI for θ . Obtain the 90%CI for π in two ways:- (a) using an exact (Clopper-Pearson) CI for π (b) using a normal-approximation to the distribution of $\hat{\pi}$

- ii. Compute a 90% interval for the rate ratio θ using the Likelihood Ratio criterion of 0.258 i.e the Log Likelihood Ratio criterion of -1.353 [see C&H's remarks on page 22, and on pages 89-91].

Do so in 3 ways, using

- (a) the (binomial) likelihood $L(\theta)$,
- (b) the (binomial) likelihood $L(\log[\theta])$,
- (c) a normal-approximation to the (binomial) likelihood $L(\log[\theta])$ [see [C&H Ch. 9](#)]

- iii. Compute a 90% credible interval for the rate ratio θ by treating the observed 2:136 split of the 138 cases as the realization of a binomial random variable, with $n = 138$, $\pi = \frac{6\theta}{6\theta+94}$. Again, obtain it in two ways:- using the binomial likelihood itself, along with a suitable (say a Beta) prior; using, as Spiegelhalter et al do, a normal-approximation to the likelihood, and a normal (i.e., Gaussian) prior.

- iv. Compute a 90% interval for the rate ratio θ using generalized linear model software, a logit link, and a single binomial observation (see example above). Which of the methods is the estimate from GLM equivalent to?

- v. (In point/bullet form) what are the take-home data-analysis messages from this exercise?

Supplementary Exercise 13.6: A Controlled Trial of a [A Human Papillomavirus Type 16 Vaccine](#)

JH revisited this exercise in 2020: See

... [Worked examples, past and ongoing Vaccine Trials, Nov, 2020](#)

Background: Approximately 20 percent of adults become infected with human papillomavirus type 16 (HPV-16). Although most infections are benign, some progress to anogenital cancer. A vaccine that reduces the incidence of HPV-16 infection may provide important public health benefits.

Methods: In this double-blind study, we randomly assigned 2392 young women (defined as females 16 to 23 years of age) to receive three doses of placebo or HPV-16 virus-like-particle vaccine (40 μg per dose), at day 0, month 2, and month 6. Genital samples to test for HPV-16 DNA were obtained at enrollment, one month after the third vaccination, and every six months thereafter. Women were referred for colposcopy according to a protocol. Biopsy tissue was evaluated for cervical intraepithelial neoplasia and analyzed for HPV-16 DNA with use of the polymerase chain reaction. The primary end point was persistent HPV-16 infection, defined as the detection of HPV-16 DNA in samples obtained at two or more visits. The primary analysis was limited to women who were negative for HPV-16 DNA and HPV-16 antibodies at enrollment and HPV-16 DNA at month 7.

Results: The women were followed for a median of 17.4 months after completing the vaccination regimen. The incidence of persistent HPV-16 infection was 3.8 per 100 woman-years at risk in the placebo group and 0 per 100 woman-years at risk in the vaccine group (100 percent efficacy; 95 percent confidence interval, 90 to 100; $P < 0.001$). All nine cases of HPV-16-related cervical intraepithelial neoplasia occurred among the placebo recipients.

Conclusions: Administration of this HPV-16 vaccine reduced the incidence of both HPV-16 infection and HPV-16-related cervical intraepithelial neoplasia. Immunizing HPV-16-negative women may eventually reduce the incidence of cervical cancer.

(*N Engl J Med* 2002;347:1645-51. *Link to full article is given in title of question.*)

- i. Why this design rather than a “fixed number of woman-years-of-follow-up” design?
- ii. Let I denote incidence, v denote the vaccinated and u the unvaccinated, [Clayton and Hills use the general letters λ_v and λ_u]. Let IR denote the incidence ratio I_v/I_u , [Clayton and Hills use the general letter θ]. ‘Vaccine efficacy’ (E) is defined as a percentage

$$E = 100 \times (I_u - I_v) / I_u = 100 \times (1 - I_v / I_u) = 100 \times (1 - IR) = 100 \times (1 - \theta)$$

Consider a *very large* R.C.T., so that random variation is not an issue. A fraction F_v received the vaccine, and the average follow-up time was PT_V units; the remaining fraction $F_u = 1 - F_v$ received the placebo, and the average follow-up time was PT_U units. Denote the number of cases

(of persistent infection) in the un-vaccinated sub-population by C_u and the corresponding number of cases in the vaccinated sub-population by C_v . Let $C_{total} = C_u + C_v$.

[Clayton and Hill use the letter D , presumably to stand for numbers of deaths; we use the more general letter C for ‘cases of’, i.e., ‘transitions’ from the initial state (HPV-) to the state the vaccine is intended to prevent (persistent HPV+).] Let $\Pi = C_v/C_{total}$ denote the (theoretical) proportion of proportion of all cases that had been vaccinated.

- Assuming the rate ratio remains constant over time, express the parameter Π as a function of (a) the design parameters F_v and PT_v/PT_u , and the parameter IR (or θ), (b) the design parameters F_v and PT_v/PT_u , and the parameter E .
 - Show the mathematical link between these parameters and the ones C&H use at the top of page 127.
- iii. In the actual study cited above, the primary per-protocol efficacy analysis was based on observing persistent HPV-16 infection in 0 of 768 vaccinated women followed for 1084.0 woman years (w-y) and 41 in 765 unvaccinated women followed for 1076.9 women years (rate 3.8 per 100w-y).
- This problem is similar in structure to that analyzed by C&H in their exercise 13.1 & 13.3. Examine the methods they used (their solutions are on p. 131-132.) Is it possible to use C&H’s method with the HPV data? If so, carry them out. If not, describe what other approach(es) is(are) possible, and carry it(them) out.
- iv. (In point/bullet form) what are the take-home data-analysis messages from this exercise?

request to the authors asking for these specific numbers (but do not e-mail the authors! JH has in fact obtained these numbers from Dr Ayas, and they will form the basis for some of a future homework).

- iv. Is OR the correct term for the ratio being estimated here?

Supplementary Exercise 13.7: Extended Work Duration and the Risk of Self-reported Percutaneous Injuries in Interns: [article here](#)

Refer to rows 2 and 3 of Table 3. in the article.

- i. Manually calculate ORs and 95% CIs, and repeat by computer software.
- ii. Explain why your answers do not match those reported (hint: see the paragraph beginning “To assess the relationships...” in the last column of page 1057 of the article.
- iii. exactly what (and how many) numbers would you need to carry out their analysis for row 3 (injuries in ICU). Answer in the form of a 1-paragraph

Supplementary Exercise 13.8: *Cancer Risk among Children Born after Assisted Conception*⁸

BACKGROUND: Accurate population-based data are needed on the incidence of cancer in children born after assisted conception.

METHODS: We linked data on all children born in Britain between 1992 and 2008 after assisted conception without donor involvement with data from the United Kingdom National Registry of Childhood Tumours to determine the number of children in whom cancer developed before 15 years of age. Cohort cancer rates were compared with population-based rates in Britain over the same period, with stratification for potential mediating and moderating factors, including sex, age at diagnosis, birth weight, singleton versus multiple birth, parity, parental age, type of assisted conception, and cause of parental infertility.

RESULTS: The cohort consisted of 106,013 children born after assisted conception (700,705 person-years of observation). The average duration of follow-up was 6.6 years. Overall, 108 cancers were identified, as compared with 109.7 expected cancers (standardized incidence ratio, 0.98; 95% confidence interval [CI], 0.81 to 1.19; $P=0.87$). Assisted conception was not associated with an increased risk of leukemia, neuroblastoma, retinoblastoma, central nervous system tumors, or renal or germ-cell tumors. It was associated with an increased risk of hepatoblastoma (standardized incidence ratio, 3.64; 95% CI, 1.34 to 7.93; $P=0.02$; absolute excess risk, 6.21 cases per 1 million person-years) and rhabdomyosarcoma (standardized incidence ratio, 2.62; 95% CI, 1.26 to 4.82; $P=0.02$; absolute excess risk, 8.82 cases per 1 million person-years), with hepatoblastoma developing in 6 children and rhabdo-myosarcoma in 10 children. The excess risk of hepatoblastoma was associated with low birth weight.

CONCLUSIONS: There was no increase in the overall risk of cancer among British children born after assisted conception during the 17-year study period. Increased risks of hepatoblastoma and rhabdomyosarcoma were detected, but the absolute risks were small. (Funded by Cancer Research UK and others.)

STATISTICAL ANALYSIS (in the Methods section): Person-years at risk were calculated from the date of birth until the date of a cancer diagnosis, December 31, 2008, or the child's 15th birthday, whichever came first, and were categorized according to sex, age at diagnosis (0, 1 to 4, 5 to 9, or 10 to 14 years), birth weight, gestational age at birth, singleton or multiple birth, parity, maternal and paternal age, type of assisted conception, fresh or cryopreserved embryos, and cause of parental infertility. To determine the expected number of cancers in the cohort if the risk for cohort members was the same as that for the general population, we used the calculated person-years at risk in conjunction with the NRCT cancer incidence rates for the general population of Britain of the same age during the same period.²⁹ See Figure S2 in the Supplementary Appendix for details of planned analyses. The number of observed cancers was assumed to follow a Poisson distribution. Standardized incidence ratios, the ratio of observed to expected numbers of cancers, and exact 95% confidence intervals were calculated. P values of less than 0.05, calculated on the basis of the chi-square test,²⁹ were considered to indicate statistical significance. Analyses were performed with the use of STATA software, version 11.³⁰

⁸N Engl J Med 2013;369:1819-27.

⁹The reference is to 29. Breslow NE, Day NE. Statistical methods in cancer research. Vol. 2. The design and analyses of cohort studies. Lyon, France: International Agency for Research on Cancer, 1987. (IARC scientific publications no. 82.) See also the textbook by Armitage and Berry, or JH's Notes for the intensity parameter of the Poisson distribution.

- i. "Overall, 108 cancers were identified, as compared with 109.7 expected cancers (standardized incidence ratio, 0.98; 95% confidence interval [CI], 0.81 to 1.19; $P=0.87$)."

Compute both the 95% CI and the P-value using (a) the exact distribution of a Poisson random variable; (b) the normal approximation to this random variable; (c) the normal approximation to the log of this random variable; the Poisson distribution in a generalized linear model with (e) identity and (f) log link. For all analyses assume that the 109.7 is a scaled down version of the UK childhood cancer counts, scaled down to match the age-year distribution of the 700,705 child years of observation of the cohort¹⁰

- ii. "It was associated with an increased risk of hepatoblastoma (standardized incidence ratio, 3.64; 95% CI, 1.34 to 7.93; $P=0.02$; absolute excess risk, 6.21 cases per 1 million person-years) and rhabdomyosarcoma (standardized incidence ratio, 2.62; 95% CI, 1.26 to 4.82; $P=0.02$; absolute excess risk, 8.82 cases per 1 million person-years)"

Show how, just from the information in the reported "(standardized incidence ratio, 3.64; 95% CI, 1.34 to 7.93)" and the table of CI's for the mean of a Poisson random variable, back-calculate the number of children in whom hepatoblastomas developed, and how many would have been expected based on the general UK rates. *Hint:* see "3.2 Leukemia Rate Triples near Nuke Plant: Study" in the "Notes for intensity rates:models".

- iii. According to the USA SEER data from 1975-1995 (see below), the % distribution of childhood (to age 15) cancers over the XII major ICCC categories is: 31.5, 10.7, 20.2, 7.8, 3.1, 6.3, 1.3, 4.5, 7, 3.5, 3.5, 0.5.

Conditional on the sum $y = y_1 + y_2$ of $y_1 \sim \text{Poisson}[\mu_1]$ and $y_2 \sim \text{Poisson}[\mu_2]$ random variables, the distribution of the $\{y_1, y_2\}$ split is binomial with parameter $\pi = \mu_1/(\mu_1 + \mu_2)$, $1 - \pi = \mu_2/(\mu_1 + \mu_2)$.

Likewise, the (sum-conditional) distribution of the split of several (e.g. XII) Poisson counts, is multinomial with $\pi_j = \mu_j/(\mu_1 + \dots + \mu_{XII})$.

Using the 12 above percentages as multinomial relative frequencies, and e.g., `rmultinom` in R, simulate how likely it would be, in 108 such cancers, to obtain a statistically significant excess in *at least one* ICCC category.

¹⁰From UK Office of National Statistics & USA SEER: The numbers of births in England and Wales went steadily down from 690K to 590K from 1992 to 2001 and then steadily up to 708K in 2008. "The estimated populations of the four constituent countries of the UK in mid-2012 are 53.5 million people in England, 5.3 million in Scotland, 3.1 million in Wales and 1.8 million in Northern Ireland." SEER covers $\approx 14\%$ of USA population]

INTRODUCTION

Table 1: Percent distribution of childhood cancers by ICCC category and age group, all races, both sexes, SEER, 1975-95

	Age					
	<5	5-9	10-14	15-19	<15	<20
All Sites - Number of cases	9,402	5,024	5,419	9,814	19,845	29,659
	%	%	%	%	%	%
All Sites	100.0	100.0	100.0	100.0	100.0	100.0
I(total) - Leukemia	36.1	33.4	21.8	12.4	31.5	25.2
Ia - Lymphoid Leukemia	29.2	27.2	14.7	6.5	24.7	18.7
Ia - excl. Acute Lymphoid	0.2	0.3	0.2	0.1	0.2	0.2
Acute Lymphoid	29.0	27.0	14.5	6.4	24.5	18.5
Ib - Acute Leukemia	4.6	4.1	5.4	4.1	4.7	4.5
Ib - excl. Acute Myeloid	1.9	0.9	1.6	0.9	1.5	1.3
Acute Myeloid	2.8	3.2	3.8	3.2	3.2	3.2
Ic - Chronic myeloid leukemia	0.6	0.7	0.9	1.2	0.7	0.9
Id - Other specified leukemias	0.2	0.2	0.1	0.1	0.2	0.2
Ie - Unspecified leukemias	1.4	1.2	0.8	0.5	1.2	1.0
II(total) - Lymphomas and reticuloendothelial neoplasms	3.9	12.9	20.6	25.1	10.7	15.5
IIa - Hodgkins' disease	0.4	4.5	11.4	17.7	4.4	8.8
IIb - Non-Hodgkins' Lymphoma	2.0	5.2	6.1	6.0	4.0	4.6
IIc - Burkitt's lymphoma	0.8	2.4	1.9	0.6	1.5	1.2
IId - Miscellaneous lymphoreticular neoplasms	0.4	0.2	0.3	0.2	0.3	0.3
IIe - Unspecified lymphomas	0.3	0.7	0.9	0.7	0.6	0.6
III(total) - CNS and miscellaneous intracranial and intraspinal neoplasms	16.6	27.7	19.6	9.5	20.2	16.7
IIIa - Ependymoma	2.6	1.3	1.1	0.5	1.9	1.4
IIIb - Astrocytoma	6.7	14.2	11.8	6.0	10.0	8.7
IIIc - Primitive neuroectodermal tumors	4.3	6.3	3.1	1.0	4.5	3.3
IIId - Other gliomas	2.2	5.0	2.9	1.5	3.1	2.6
IIIe - Miscellaneous intracranial and intraspinal neoplasms	0.2	0.3	0.3	0.3	0.3	0.3
IIIf - Unspecified intracranial and intraspinal neoplasms	0.5	0.6	0.4	0.2	0.5	0.4
IV(total) - Sympathetic nervous system	14.3	2.7	1.2	0.5	7.8	5.4
IVa - Neuroblastoma and ganglioneuroblastoma	14.0	2.6	0.8	0.3	7.5	5.1
IVb - Other sympathetic nervous system tumors	0.3	0.1	0.3	0.1	0.3	0.2
V(total) - Retinoblastoma	6.3	0.5	0.1	0.0	3.1	2.1
VI(total) - Renal tumours	9.7	5.4	1.1	0.6	6.3	4.4
VIa - Wilms' tumor, rhabdoid and clear cell sarcoma	9.7	5.2	0.7	0.2	6.1	4.2
VIb - Renal carcinoma	0.1	0.1	0.4	0.4	0.2	0.2
VIc - Unspecified malignant renal tumors	0.0	0.0	0.0	0.0	0.0	0.0

INTRODUCTION

Table 1 (cont'd): Percent distribution of childhood cancers by ICCC category and age group, all races, both sexes, SEER, 1975-95

	Age					
	<5	5-9	10-14	15-19	<15	<20
All Sites - Number of cases	9,402	5,024	5,419	9,814	19,845	29,659
	%	%	%	%	%	%
VII(total) - Hepatic tumors	2.2	0.4	0.6	0.6	1.3	1.1
VIIa - Hepatoblastoma	2.1	0.2	0.1	0.0	1.0	0.7
VIIb - Hepatic carcinoma	0.1	0.3	0.5	0.5	0.3	0.3
VIIc - Unspecified malignant hepatic tumors	0.0	0.0	0.0	0.0	0.0	0.0
VIII(total) - Malignant bone tumors	0.6	4.6	11.3	7.7	4.5	5.6
VIIIa - Osteosarcoma	0.2	2.2	6.6	4.4	2.4	3.1
VIIIb - Chondrosarcoma	0.0	0.1	0.6	0.6	0.2	0.3
VIIIc - Ewing's sarcoma	0.3	2.1	3.7	2.3	1.7	1.9
IIId - Other specified malignant bone tumors	0.1	0.1	0.3	0.3	0.2	0.2
IIIIe - Unspecified malignant bone tumors	0.0	0.1	0.1	0.1	0.1	0.1
IX(total) - Soft-tissue sarcomas	5.6	7.5	9.1	8.0	7.0	7.4
IXa - Rhabdomyosarcoma and embryonal sarcoma	3.4	4.2	2.8	1.9	3.4	2.9
IXb - Fibrosarcoma, neurofibrosarcoma and other fibromatous neoplasms	1.0	1.4	3.1	3.1	1.7	2.1
IXc - Kaposi's sarcoma	0.0	0.1	0.0	0.1	0.0	0.1
IXd - Other specified soft-tissue sarcomas	0.7	1.2	2.2	2.1	1.3	1.5
IXe - Unspecified soft-tissue sarcomas	0.4	0.7	1.0	0.9	0.6	0.7
X(total) - Germ-cell, trophoblastic and other gonadal tumors	3.3	2.0	5.3	13.9	3.5	7.0
Xa - Intracranial and intraspinal germ-cell tumors	0.2	0.8	1.3	0.9	0.7	0.7
Xb - Other and unspecified non-gonadal germ-cell tumors	1.7	0.1	0.5	1.4	1.0	1.1
Xc - Gonadal germ-cell tumors	1.4	1.1	3.0	9.4	1.7	4.2
Xd - Gonadal carcinomas	0.0	0.0	0.4	1.9	0.1	0.7
Xe - Other and unspecified malignant gonadal tumors	0.0	0.1	0.1	0.3	0.1	0.1
XI(total) - Carcinomas and other malignant epithelial neoplasms	0.9	2.5	8.9	20.9	3.5	9.2
XIa - Adrenocortical carcinoma	0.2	0.1	0.1	0.1	0.1	0.1
XIb - Thyroid carcinoma	0.1	1.0	3.5	7.4	1.2	3.3
XIc - Nasopharyngeal carcinoma	0.0	0.1	0.7	0.8	0.2	0.4
XId - Malignant melanoma	0.4	0.7	2.0	6.8	0.9	2.9
XIe - Skin carcinoma	0.0	0.0	0.1	0.1	0.0	0.0
XIf - Other and unspecified carcinomas	0.2	0.7	2.5	5.7	1.0	2.5
XII(total) - Other and unspecified malignant neoplasms	0.5	0.3	0.6	0.8	0.5	0.6
XIIa - Other specified malignant tumors	0.1	0.1	0.1	0.3	0.1	0.1
XIIb - Other unspecified malignant tumors	0.4	0.3	0.5	0.5	0.4	0.4

2020 COVID Vaccine Trials

Supplementary Exercise 13.9: 2020.11.09 [interim] announcement from Pfizer and BioNTech

The total number of infections in the trial was 94, and the claimed VE was over 90%.

Exercise: Use back-calculations to put an upper bound on how many of the infections were in the Vaccine arm.

See [Worked examples, past and ongoing Vaccine Trials, Nov, 2020](#)

Supplementary Exercise 13.10: 2:1 Randomization Ratio

The AstraZeneca/Oxford trial randomized 2 to Vaccine for every 1 to Placebo [see Protocol]

- i. Relative to a 1:1 randomization, how does that affect (a) the efficiency (b) the analysis?
- ii. Check the power calculation.

See [Worked examples, past and ongoing Vaccine Trials, Nov, 2020](#)

Supplementary Exercise 13.11: The SputnikV Trial, et al.

Consult the report of the results of the interim analysis, available [here](#).

- i. In light of your findings in 13.10, comment on the randomisation ratio (in the Randomisation and masking paragraph).
- ii. Comment on the power calculations (in the Statistical analysis section).
- iii. Comment on the appropriateness of the OR measure (top of the first column of page 6).
- iv. In Table 2, the reported VEs are based on COVID-19 occurrence from 21 days after dose 1 (day of dose 2). In view of the numbers at risk at the various post-day 21 shown shown in Figure 2, is it appropriate/meaningful to use the denominators they did to calculate the various OR's and thus the various VEs?
- v. Use the numbers in Figure 2 to compute (approximate) amounts of person-time. From these, calculate (approximate) incidence rates. From

these, calculate a VE, and a CI. (Just like the authors did, use COVID-19 occurrence from 21 days after dose 1.)

- vi. Explain why the 'Any time after dose 1' VE at the bottom of Table 2 (the 73.1%) is not very meaningful/helpful.
- vii. What were the (primary) time windows used in the [Pfizer-BioNTech](#) and [Moderna](#) trials? (See Figure 3 in each report.)
- viii. Are you able to reproduce the VE and CI calculations in these two trials?
- ix. How meaningful is the 52.4% VE estimate given in the second row of the 4 rows of results at the bottom of the Pfizer-BioNTech report? Do you agree with the point made the two Canadian authors Skowronski and De Serres in this [letter to the Editor](#)?
- x. The second paragraph of the efficacy results of the Moderna trial began

A key secondary end point evaluated the efficacy of mRNA-1273 at preventing severe Covid-19. Thirty participants in the trial had severe Covid-19; all 30 were in the placebo group (indicating vaccine efficacy of 100% [95% CI, could not be estimated to 1.0]),

Had they consulted you, could you have provided them with a lower limit for their CI? *Hint:* look at 'A Controlled Trial of a Human Papillomavirus Type 16 Vaccine – and schematic to illustrate the relation between the Proportion of Vaccinates Cases and the Vaccine Efficacy' in [Worked examples, past and ongoing Vaccine Trials, Nov, 2020](#)